

# GUANGDONG

TRAVEL MAP (HAND ILLUSTRATED)



- ### China National Tourism Administration Overseas Offices
- China National Tourism Administration Tokyo Office**  
15-20-5071 Ar China Building B/F, 2-5-2 Toranomon, Minato-ku, Tokyo, Japan  
Tel: +81-3-2621-6866 Fax: +81-3-2621-6886  
Web: www.cntrp.jp E-mail: tokyo@cntrp.jp
  - China National Tourism Administration Osaka Office**  
556-5017 OCAAT Building 4/F, Minatomachi, Naniwa-ku, Osaka, Japan  
Tel: +81-6-6635-3280 Fax: +81-6-6635-3281  
Web: www.cntrp-osaka.jp E-mail: osaka@cntrp.jp
  - China National Tourism Office, Singapore**  
13-02A Suntec Tower One, Singapore 099697  
Tel: +65-6338-2220 Fax: +65-6338-0777  
E-mail: singapore@cntrp.gov.cn
  - China National Tourism Office, Kathmandu**  
4242 Bheram Cms. Road, Patan, Lalitpur, Kathmandu, Nepal  
Tel: +977-1-4400-1054 Fax: +977-1-4400-1033  
E-mail: nepal@cntrp.gov.cn
  - China National Tourism Office, Seoul**  
41401 Daejeong Bldg, 3/F, Tongyeo, Chung-Au, Seoul 100-706, Korea  
Tel: +82-2-773-0283 Fax: +82-2-797-3210  
Web: www.cntrp.or.kr E-mail: cntrp@korean.net
  - China National Tourism Office, New Delhi**  
D-18, Maitra Marg, Chanakya, New Delhi-110021, India  
Tel: +91-11-4168-0410 Fax: +91-11-4168-0411  
Web: www.cntrp.org.in E-mail: newdelhi@cntrp.org.in
  - China National Tourism Office, Sydney**  
110 Pitt Street, 25th Floor, Sydney NSW 2000, Australia  
Tel: +61-2-9552-9638 Fax: +61-2-9552-2728  
E-mail: sydney@cntrp.gov.au
  - China National Tourism Office, New York**  
210 Lexington Ave., 25th Floor, New York City, NY 10017, USA  
Tel: +1-212-760-8218 Fax: +1-212-760-8800  
Web: www.cntrp.org E-mail: ny@cntrp.org
  - China National Tourism Office, Los Angeles**  
350 South Grand Boulevard, Suite 700, Century City, CA 90008-1920, USA  
Tel: +1-818-545-7927 Fax: +1-818-545-7906  
E-mail: los@cntrp.org
  - China National Tourism Office, Toronto**  
480 Denison Street, 8th Floor, Toronto, Ontario M5G 1S7, Canada  
Tel: +1-416-598-9526 Fax: +1-416-598-0302  
Web: www.cntrp-toronto.com E-mail: toronto@cntrp.ca
- China National Tourism Administration www.travelchina.gov.cn

## Guangdong Overview

Guangdong, "Yue" for short, in southern China is on the south of the Nanling Mountains and faces the South China Sea as well as Southeast Asian countries across the sea.

The province has a humid and rainy subtropical monsoon climate and endures many typhoons. In the mountainous areas of North Guangdong, the weather is rather dynamic, changing with the topography.

Guangdong has a ragged coastline with beautiful sandy beaches and pearl-like islands, such as Dong'ao Island and Nan'ao Island. In the magical mountainous areas of Northern Guangdong, there is a magnificent Daxia landscape. In Eastern Guangdong there are beautiful mountains and rivers, such as the Dinghu Mountain and Seven Star

Area & Population	Administrative Divisions
179,800 square kilometers. By the end of 2012, the permanent population was 86.37 million.	Guangdong Province comprises 21 prefecture-level cities, including Guangzhou, Qingyuan, Shaoguan, Heyuan, Meizhou, Chaozhou, Shantou, Jieyang, Shanwei, Huizhou, Dongguan, Shenzhen, Zhuhai, Zhongshan, Jiangmen, Foshan, Zhaoqing, Yunfu, Yangjiang, Maoming, and Zhanjiang.



## Guangzhou

Guangzhou is China's southern gate and one of China's three metropolises. With a history of over 2,000 years, it is a historical and cultural city known as the "Millennium Business Capital".

Website: www.visitgz.com

### Yuexiu Park

As one of Eight Sights of Guangzhou, the park contains the Dongxixi, Nanxixi and Beixixi lakes, as well as the famous Statue of Five Goats, Zhenhai Tower, Ming ancient city walls, the Square Fort and other historical sites. Among them, the Statue of Five Goats is the symbol of Guangzhou.



### Shamian Island

With a beautiful environment and gorgeous scenery, Shamian Island boasts more than 150 European-style buildings. The new Baroque and pseudo-Gothic styles are especially unique and the most exotic European buildings in Guangzhou.



## Chaoshan Culture

### Chaozhou Kaiyuan Temple

Kaiyuan Temple is a complete courtyard-style Buddhist temple. On the stone columns in the hall there are 78 Tang and Song dynasties stone inscriptions depicting Buddhist stories, rare birds and animals, lotus and auspicious plants and other patterns and images which are simple, spectacular, and extremely valuable.

### Chaozhou Xiangzi Bridge

The Xiangzi Bridge, also known as the Guangji Bridge, stretches across the Hanjiang River. The Xiangzi Bridge, Zhaozhou Bridge, Luoyang Bridge, and Lugou Bridge



## Guangzhou

### Baiyun Mountain

The Baiyun Mountain has been called "the most beautiful in Guangzhou" since ancient times. The main peak is 382 meters high with winding streams and ravines. From the top one can overlook the whole city as well as the Pearl River.

Website: www.baiyunshan.com.cn

### Chimelong Tourist Resort

Chimelong Tourist Resort owns Chimelong Paradise, Chimelong International Circus, Xiangjiang Safari Park, Chimelong Water Park, and Guangzhou Crocodile Park, which are all exciting.

Website: www.chimelong.com



## Mountain and Sea Scenery

### Shantou Nan'ao Island

Blue sky and sea, green islands, golden sand, and white waves are the main colors of Nan'ao Island. On the island, sunrise and sunset clouds offer superb views, and it is also known as the "Oriental Hawaii".

### Zhaoqing Star Lake

The Star Lake is a national scenic area, which includes the two scenic spots: Seven Star Crags and the Dinghu Mountain. The Seven Star Crags scenic area is made up mainly of rocks, peaks, lakes, and karst landforms. The Dinghu Mountain scenic area is made up mainly of forests and waterfalls.

Website: www.zqsh.gov.cn

### Nanhai Mount Xiqiao

Mount Xiqiao is an ancient volcano with beautiful natural scenery. Its most famous sites are the Baiyun Caves, Wun Chuen Sin Kwoon, and Baofeng Temple.



## Historical Sites

### Zhaoqing Old Academy of Deqing

The Old Academy of Deqing is a treasure of Chinese wood construction from the Yuan Dynasty. The imposing Hall of Great Achievement is the major building of the academy. There are no nails or rivets in its eaves, which are only connected with tenons installed without the slightest error, reflecting the superb artisanship of the ancients.

### Zhaoqing Duanzhou Ancient City Wall

The Ancient City Wall, built in the Song Dynasty, is the only complete ancient city wall in Guangdong. Currently the wall stands 10 meters above the ground. Both sides are built with brick, while the middle is made up of rammed earth. There are 28 peripheral battlements. Currently the wall is largely intact.

### Foshan Foshan Ancestral Temple

The Foshan Ancestral Temple contains many strong local features. In the main hall a



## Shenzhen

### Window of Shenzhen and Hong Kong

The Window of Shenzhen and Hong Kong on Diwang Building is Asia's first high-rise sightseeing area. It combines an urban landscape with high technology. One can enjoy a 360-degree panoramic view overlooking Shenzhen and Hong Kong.

Website: www.shenzhen.org

### Dameisha

Dameisha is the most popular beach resort in Shenzhen. It features the longest beach there with clear water, wide beaches, and fine sand. Events held here include horse riding on sandy beaches, water skiing, water parachuting and others.

### Dapeng Fortress

Dapeng Fortress was built in the Ming Dynasty. With majestic ancient city gates, ancient houses and an antique magnificent



## Kaiping Diaolou

The Kaiping Diaolou, a special example of local Chinese architecture, built around the 16th century, is a multi-story tower building integrating defense and residential areas as well as Chinese and Western architectural styles.

Website: www.kptour.com

### Li Garden

Li Garden was built by the family of Mr. Xie Weili, a Chinese living in America, and it is divided into three sections: a large garden, a small garden and a villa area. Each section is separated by walls or artificial rivers and connected with bridges, pavilions and corridors, creating an exquisite design.

### Zili Village

Zili Village is the village with the most concentrated watchtowers in Kaiping area. Among the lotus ponds, bamboo forests and



rice paddies there are 15 watchtowers of exquisite architecture and various styles. Mingshiou, Yesheng Julu and Guansheng Julu are the most famous.

### Maxianglong Watchtower Group

Maxianglong Village is the village with the best environment in Kaiping. It lies against the magnificent Baizu Mountain, and faces the clear waters of the Tanjiang River. Its green mountains and rivers form a charming arrangement.



## Zhuhai

Zhuhai, known as the "100 Islands City," has the largest ocean area, the most islands and the longest coastline in the Pearl River Delta. A new style garden city, Zhuhai has a beautiful environment, mountains and rivers and a pleasant climate.

Website: www.okzhuhai.com

### Dong'ao Island

The Dong'ao Island landscape includes blue seas, green mountains, and cooking smoke curling upward from the fishing villages. A tourist attraction providing surfing, sailing, and diving sports, it is known as the "Diamond Beach".

### Lovers' Road

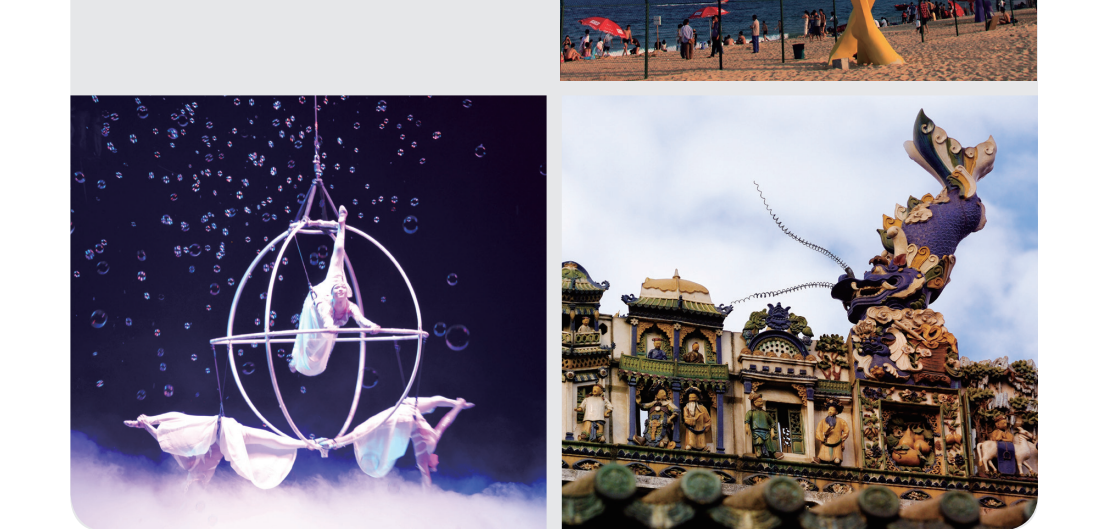
Lovers' Road is a section of beach road near the sea in Zhuhai, which stretches around the green corner of the South China Sea coast like a ribbon. Near the shore there are many islands and reefs where lovers come to take wedding photos.



## Recommended Tourist Itineraries

- **A Tour of Flower City Guangzhou**  
Route: Yuexiu Park - Shamian Island - Chen Clan Temple - Canton Tower - Baiyun Mountain - Chimelong - Conghua Hot Spring  
Sight: Guangzhou is a cultural city with a history of over 2,200 years. Many Lingnan cultural relics from the past 1,000 years are well preserved, including the Chen Clan Temple, the Xiguan Mansion, the Tomb of the Nanyang King, and the Shamian Island.

- **A Tour of Mount Danxia Magical**  
Route: Yangyuan Stone - Jinjiang River - Zhangao Peak - Biaozhuan Temple - Xianglong Lake  
Sight: Mount Danxia is a world geological park, a World Natural Heritage Site, and the largest and most beautiful Danxia landscape scenic area in Guangdong Province. It is also the first of the four famous mountains there.



## Transportation

- **By Air**  
Guangzhou Baiyun International Airport and Shenzhen Bao'an International Airport are the two major airports in Guangdong.

- **By Train**  
Wuhan-Guangzhou High-speed Railway, Xiamen-Shenzhen High-speed Railway, Beijing-Guangzhou Railway, Beijing-Kowloon Railway, Guangzhou-Kowloon Railway, and Guangzhou-Maoming Railway are major railway lines in Guangdong. The Pearl River Delta region has a developed intercity rail traffic system.

- **By Road**  
Guangdong's highway traffic is also very convenient. With the Pearl River Delta city group being a representative, the highways connect almost all of the large and medium-sized Chinese cities, and the traffic among them



## Accommodations & Travel Services

Name	Star/rate	Add	Tel
Sheraton Guangzhou Hotel	5	No.208 Tianhe Rd., Tianhe District, Guangzhou	20-66688888
Guangzhou Shui Shan Fang Hotel	4	No.163 Donghua S. Rd., Yuecui District, Guangzhou	20-83806668
Viemna Hotel (Tianlong)	3	No.918 Guangzhou Mid. Rd., Tianhe District, Guangzhou	20-38869988
The Venice Hotel Shenzhen	5	No.9028 Shennan Ave., Nanshan District, Shenzhen	755-26936888
Meisha Hotel	4	No.6 Jimba St., Dameisha Yantian District, Shenzhen	755-25603000
Chang An Holiday Hotel	5	No.2130 Yuehua Mid. Rd., Xiangzhou District, Zhuhai	756-8805643
Chaoshou Hotel	4	No.1 Chaofeng Rd., Chaozhou	768-2333333
Golden Gulf Hotel Shantou	5	No.96 Jimba St., Longhu District, Shantou	754-88263263
Shaoguan Lea Grand Hotel	5	Qiming North Rd., Zhenjiang District, Shaoguan	751-81988888
Zhaoqing OVC Hotel	5	Xinghuo Ave., Duanzhou District, Zhaoqing	758-28888888

Name	Add	Tel
Guangzhou Comfort International Travel Agency	5 <sup>th</sup> floor, Kangfala International Building, No.313 Yangyang Mid. Rd., Guangzhou	20-83330000
Guangzhou Chinese Travel Agency	Next to the Bonesseting Hospital, Yuecui District, Guangzhou	20-36051422
Shenzhen Comfort Travel Agency	B 20 <sup>th</sup> floor, Kaisheng Building, Haitian Rd., Futian District, Shenzhen	755-25890008
Zhuhai Wanliu Travel Agency	No.1063 Jianhuo Rd., Gongbei, Xiangzhou District, Zhuhai	756-88826000
Kaiping Chinese Travel Agency	No.1 Wenxin Rd., Sanbu District, Kaiping	759-2233355



## Dining and Shopping

- **Dining**  
Cantonese cuisine is known for its seafood. Famous dishes include Baiyun trotter, roasted suckling pig, Cantonese-style roast meat, poached chicken, snake soup, honey pork, etc. Snacks mainly include rice noodles, wonton noodles, shrimp dumplings, minced pork congee with preserved egg, steamed vermicelli rolls, Tingzai porridge, cued with double cream, turnip pudding and so on.

- **Shopping**  
Special local products include fresh tropical fruits, herbal tea, soup bases, Guangdong embroidery, Guangdong color,



## Mount Danxia

### Mount Danxia

Mount Danxia is a world geological park, World Natural Heritage Site, and the largest and most beautiful Danxia landscape scenic area in Guangdong Province, as well as the first of the four famous mountains in Guangdong, known as "China Redstone Park".

Website: www.danxianshan.org.cn

### Yangyuan Stone

Yangyuan Stone, straight and tall, symbolizes the male reproductive organ and faces Mount Danxia across the Jinjiang River. Yangyuan Stone is 28 meters high and 7 meters in diameter. It is the tallest in the world among similar rocks, with the reputation of the world's "first strange stone".



## Mount Danxia

### Xianglong Lake

The Xianglong Lake's name comes from its coastline, which resembles a soaring dragon. One can take a small boat to enjoy the beautiful landscape on the river and watch red mountains and cliffs with reflections in the green water. Stone carvings depicting dragon culture on the cliffs on both banks, induce extreme reverie from visitors.

