



中国
China

ANHUI

TRAVEL MAP (HAND ILLUSTRATED)



China National Tourism Administration Overseas Offices

China National Tourism Administration Tokyo Office #106-0001 Arima Building 8F, 2-2-2 Toranomon, Minato-ku, Tokyo, Japan Tel: +81-3-5291-8888 Fax: +81-3-5291-8888 Web: www.onta.jp E-mail: tokyo@onta.jp	China National Tourist Office, London 71, Warwick Road, London, SW5 9AB, UK Tel: +44-20-7373-0888 Fax: +44-20-7373-9988 Web: www.ontolondon.co.uk E-mail: london@ontolondon.co.uk
China National Tourism Administration Osaka Office 556-0017 OCAAT Building 4F, Minatomachi, Naniwa-ku, Osaka, Japan Tel: +81-6-6935-3280 Fax: +81-6-6935-3281 Web: www.onta-osaka.jp E-mail: osaka@onta.jp	Office National du Tourisme de Chine, Paris 15 Rue de Bien, 75008 Paris France Tel: +33-1-6559-1010 Fax: +33-1-4275-3288 Web: www.china-tourism.com E-mail: paris@onta.gov.cn
China National Tourist Office, Singapore 7 Temasek Boulevard, # 12-02A Suntec Tower One, Singapore 039987 Tel: +65-6337-2220 Fax: +65-6338-0777 E-mail: singapore@onta.gov.cn	Fremdenverkehrsamt der VR China in Frankfurt Haberstrasse 6, D-60333 Frankfurt Deutschland Tel: +49-69-9514-0319 Fax: +49-69-928-490 Web: www.china-tourism.de E-mail: info@china-tourism.de
China National Tourist Office, Kathmandu 4242 Southern Court, Road Palace, Lalitpur, Kathmandu, Nepal Tel: +977-1-400-1054 Fax: +977-1-400-1053 E-mail: nepal@onta.gov.cn	Oficina Nacional de Turismo de China en Madrid C/Gran Vía, 28, P.O. Box 19, Madrid, Spain Tel: +34-91-548-0011 Fax: +34-91-548-0897 Web: www.ontomadrid.com E-mail: madrid@onta.gov.cn
China National Tourist Office, Seoul #1401 Daewoojeong Bldg., 317, Teogyang, Chung-gu, Seoul 100-170, Korea Tel: +82-2-773-0293 Fax: +82-2-797-2210 Web: www.ontoseoul.com E-mail: ontoseoul@naver.net	Fremdenverkehrsamt der VR China in Zürich Bühlstrasse 176, CH-8002 Zürich, Schweiz Tel: +41-43-651-0017 Fax: +41-43-651-0018 Web: www.china-tourism.ch E-mail: zürich@china-tourism.ch
China National Tourist Office, New Delhi D-38, Malviya Marg, Chanakya, New Delhi-110021, India Tel: +91-11-4168-0540 Fax: +91-11-4168-0541 Web: www.ontonewdelhi.com E-mail: newdelhi@onta.gov.cn	China National Tourist Office, Moscow Kulshreshtha St. 14.3, Moscow, 119218, Russia Tel: +7-495-645-0289 Fax: +7-495-642-8787 Web: www.ontomoscow.com E-mail: moscow@ontaltd.ru
China National Tourist Office, Sydney 110 Pitt Street, 2000 Sydney, NSW, Australia Tel: +61-2-952-9838 Fax: +61-2-952-2728 E-mail: sydney@onta.gov.cn	Ufficio Nazionale del Turismo Cinese, Roma Via Nazionale 76, 00184, Roma, Italy Tel: +39-6-482-8888 Fax: +39-6-4891-2429 Web: www.turismocinese.it E-mail: info@turismocinese.it
China National Tourist Office, New York 270 Lexington Ave., 520879, New York, NY 10017, USA Tel: +1-212-760-8218 Fax: +1-212-760-8800 E-mail: ny@onta.gov.cn	Asia Tourism Exchange Center Limited #17-2001, Tai Ean Plaza Center, 16 Hoi San Road, Hong Kong Tel: +852-2863-0000 Fax: +852-2861-1371 E-mail: atec@atex.com.hk
China National Tourist Office, Los Angeles 550 South Grand Boulevard, Suite 910, Century City, CA 90008, USA Tel: +1-818-545-7927 Fax: +1-818-545-7906 E-mail: los@onta.gov.cn	Association for Tourism Exchange Across the Taiwan Straits, Taipei Office 10F, No. 36, Sec. 2, Zhongxing Rd., Taipei, Taiwan Tel: +886-2-2701-2188 Fax: +886-2-2701-2189
China National Tourist Office, Toronto 490 Bloor Street West, Toronto, Ontario M5W 1K7, Canada Tel: +1-416-593-9256 Fax: +1-416-593-0302 Web: www.china-tourism.com E-mail: tokyo@onta.gov.cn	Association for Tourism Exchange Across the Taiwan Straits, Kaohsiung Sub-office Room C, 10F, Chung Cheng Building, No. 2, Chung Cheng 3rd Road, Kaohsiung, Taiwan Tel: +886-7-238-0886 Fax: +886-7-238-0209

China National Tourism Administration www.travelchina.gov.cn

Anhui Overview

Anhui Province, "Wan" for short, was named in the early Qing Dynasty through the combination of the first words of Anqing and Huizhou prefectures. Because Anqing Prefecture in the Qing Dynasty was originally called Wan State, with Wanshan Mountain and the Wanshui River in the territory, Anhui is nicknamed "Wan".

The Anhui province is a transitional zone between southern and northern China with beautiful and magnificent landscape. Mount Huang, with unique scenery, is a well-known tourist attraction. In addition, Anhui Province also boasts Mount Jiuhua, one of the four most famous Buddhist mountains, Tianzhu Mountain which is called Nanyue, Mount Qiyun, a Taoist Holy Place, the magnificent and beautiful Mount Langya, and other famous mountains.

Anhui, located between warm temperate and subtropical zones, has a warm and humid climate with four distinct seasons. The average air temperature is around 14~17°C over the whole province. It is slightly hot in summer and slightly cold in winter. Average rainfall is 800~1,800 mm, with precipitation mainly concentrated in the rainy and summer seasons.

Anhui Province has a long history. The ancient city of Shouchun in the Warring States Period, the Tomb of Yuji in Lingbi County, Taohua Lake in Jing County, the Cao Cao clan tombs in Bozhou, the Tangyue Memorial Archway Cluster in Shexian County and other sites are all living testaments to that fact.

Website: www.ahita.com.cn and other famous mountains.

Area & Population
139,400 square kilometers.
By the end of 2012, the permanent population was 59.88 million.

Administrative Divisions
Anhui province comprises 16 prefecture-level cities, including Hefei, Huaibei, Bozhou, Suzhou, Bengbu, Fuyang, Huainan, Chuzhou, Lu'an, Ma'anshan, Wuhu, Xuancheng, Tongling, Chizhou, Anqing, and Huangshan.



Hefei

Hefei was called Zhongzhou in ancient times. The Feishui River winds through the city, leaving a beautiful park around it and nurturing the hometown of Bao Zheng, an upright official known for his dignity, and providing abundant resources to this clean green city. Shushan Mountain, boasting beautiful scenery, is located in the western suburbs of Hefei, and the vast Chaohu Lake is located in the southeast.

Website: www.hfy.gov.cn

Baogong Park
Baogong Park was rebuilt at the site of Baohe Park in memory of Bao's 1,000th birthday. The whole scenic spot has a solemn atmosphere and beautiful environment. The attractions there include the Baogong Shrine and Baogong's Tomb, as well as the Qingting Pavilion, Merit Square, Baogong Memorial Hall, a fountain and other buildings.

Li Hongzhang's Former Residence

Li Hongzhang's former residence is a late Qing Dynasty building style and is the largest former residence of a famous figure



In Hefei. The former residence displays many precious pictures and objects that show the life of this late Qing Dynasty senior military-political minister, who had influence for nearly half a century in China's modern era.

Sanhe Ancient Town
Sanhe Ancient Town is an ancient water town with a history of 2,500 years. Rich human landscapes can be found here. On the Five-li Long Street in the town, ancient architecture boasts corncobs, carved beams and painted rafters. The Eight Ancient Scenic Spots, namely, the ancient river, ancient bridge, ancient dyke, ancient street, ancient folk house, ancient temple, ancient teahouse and ancient battlefield are particular to the area between the Yangtze River and the Huaihe River.



Historical Sites in Northern Anhui

Huainan Bagong Mountain

Bagong Mountain has magical and beautiful natural landscapes and a diversity of cultures, with ancient Chinese culture and the Battle of Feishui River as the mountain's trademarks. With leisure, vacation and tourism as its themes, this mountain has become one of the most famous scenic spots in China.

Bozhou Bozhou Ancient City

Bozhou is an ancient city with a history of more than 3,000 years. The Shang Dynasty sage-king Cheng Shang, Lao Zi, the founder of Taoism, sage Zhuang Zi, Cao Cao, emperor of the Wei Kingdom, Hua Tuo,

a highly skilled doctor, and other famous figures were all born here. Scenic spots here include a theatrical stage, the Bozhou old street, the ancient military roads of Cao Cao's reign, and so on.

Fengyang Imperial Tombs of the Ming Dynasty

The Imperial Tombs of the Ming Dynasty in Fengyang were the tombs of the parents of Emperor Zhu Yuanzhang, the founder of the Ming Dynasty. It was built in the early years of the Dynasty. Over its 600 years, all stone statues and imperial tomb memorial tablets, steles without inscriptions and grave mounds in the tombs have been well preserved.



Mount Jiuhua Tianzhu Mountain

Mount Jiuhua

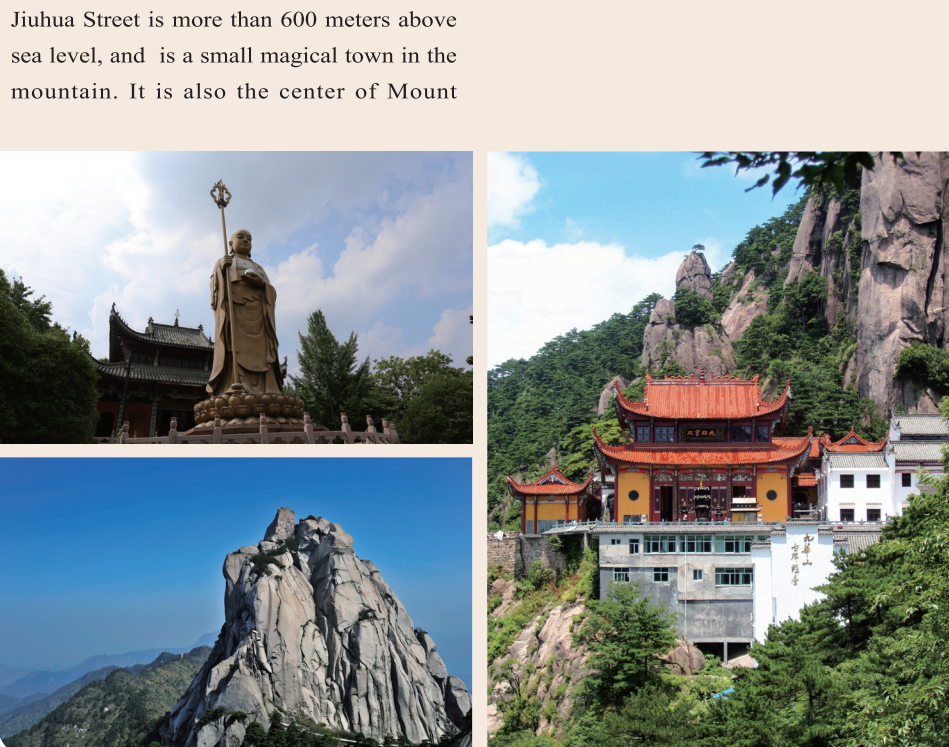
Mount Jiuhua, Mount Wutai in Shanxi Province, Mount Putuo in Zhejiang Province, and Emei Mountain in Sichuan Province are called the four famous Buddhist mountains in China. Mount Jiuhua is the site of Buddhist rites for Ksitigarbha Bodhisattva.

The main peak of Mount Jiuhua is 1,342 meters, and the mountain body is of granite. The mountain is high and steep, known as "Number One Mountain in Southeastern China". It has three burial halls, including the Shenguangling Hall, location of the buried remains of Ksitigarbha Bodhisattva. Jiuhua Street is more than 600 meters above sea level, and is a small magical town in the mountain. It is also the center of Mount

Jiuhua, with many temples here.
Website: www.jiuhua.gov.cn

Tianzhu Mountain

Tianzhu Mountain (literally "Heaven pillar mound") is a historically and culturally famous one. Its main peak has an elevation of 1,489.8 meters and towers like a huge pillar to Heaven, hence its name. Tianzhu Mountain is a granite landmark with rich geological relics. In September 2011, Tianzhu Mountain was approved by UNESCO as a world geological park.
Website: www.tzs.com.cn



Landscapes

Shucheng Wanfo Lake

Wanfo Lake is a large artificial lake, with the world's first artificial earth-rock dam. With a very large area, it is surrounded by mountains. There are 66 islands in the lake, so it is called "the thousand-island lake of Anhui".

Chuzhou Mount Langya

Mount Langya is famous in the world for its scenic beauty. The scenic area is characterized by caves, lakes, and spring water. Mount Langya has several hundred scenic spots including Mount Langya, West City Lake, Gushan Lake, the ancient courier route, the ancient pass, the ancient battlefield,



Huifeng Pavilion, Langya Temple and several hundred Tang and Song dynasties' inscriptions in the cliffs.
Website: www.zuiweng.com

Anqing Yingjiang Temple

Yingjiang Temple is a monastery with a large scale and a history of one thousand years. The temple's famous feature is the Zhengfeng Tower, an eight-square pavilion-style building with seven floors. Each square is tied with a copper bell. Stone steps lead to the top of the tower. Visitors can climb up to it to view the scenery and the imposing momentum of the Yangtze River.



Scenery in the South of Anhui

Chizhou Gunliujiang Scenic Resort

The Gunliujiang Scenic Resort has steep mountains and crisscrossing ravines, and thus splendid scenery. The main peak, Gunliu Dajiang, is 1,727 meters above sea level. On the peak, there are jagged rocks of unique shapes, old trees with luxuriant foliage, spectacular waterfalls, and wild animals. Visitors can experience an otherworldly feeling at the Gunliujiang Scenic Resort.

Ma'anshan Caishiji

Caishiji is the first of three rocks that project over the Yangtze River, and has long been a place of great military importance. From the Spring and Autumn Period to the Mingqiao Period of China, more than 20 wars

took place here. This is also the resting place of the poetic genius Li Bai.

Wuhu Fangte Happy World

Wuhu Fangte Happy World is the largest fourth-generation theme park in China. It consists of 15 themed areas including Outer Space World, Mysterious Valley, Mt Vesuvius Volcano, Lost Empires, Bolele, and so on.



Ancient Villages in Southern Anhui

Yixian County Hongcun Village

Hongcun Village is a built-up village with an ancient water system unique in China. It is known for its depictions in Chinese paintings. Rows upon rows of hundreds of ancient houses can be found in the village. Scenes out of paintings are seen all over the village.
Website: www.hongcun.com.cn

Yixian County Xidi Village

Xidi Village is in excellent condition with an exquisite layout. The 99 high-walls and deep lanes make visitors feel as if they are in a maze. The memorial archway, folk house and ancestral hall are three unique ancient

buildings in Xidi Village. Representative architecture includes the former residence of literati and officials, the Hu Wenguang Memorial Archway, the Lingyun Pavilion, Ruiyuting Residence, and so on.
Shexian County Tangyue Village
Tangyue Village is the settlement of the Bao family. The memorial archways in the ancient village are simple and elegant, arranged according to the concept of "loyalty, filial piety, moral integrity and righteousness". Owing to its broad pastoral scenery and beautiful mountains and water, the Tangyue memorial archway clusters have become a natural movie setting.



Transportation

By Air

Major airports in Anhui include Hefei Xinqiao International Airport, Huangshan Tunxi International Airport, Anqing Tianzhusan Airport, and Chizhou Jiuhuasuan Airport, etc. Hefei is the aviation hub in Anhui Province. The Xinqiao Airport, which was put into operation on May 30, 2013, is a 4E hub/trunk airport in China and international flights to Frankfurt, Singapore, Bangkok, Seoul and Osaka are provided. The airport is 32 kilometers from downtown Hefei and has the highway reaching it directly.

Historical Sites in Northern Anhui

Route: Hefei - Fengyang - Shexian County - Fuyang - Bozhou
Sight: Historical sites and cultural relics are the themes of this route. Along it, visitors can feel the truth implied in the historical parable "To see every bush and tree on Mount Bagong as an enemy soldier", and appreciate the exquisite stone statues in Fengyang County, hometown of the Ming Emperor Zhu Yuanzhang.

Useful Telephone Numbers and Websites

IDD Code of China	86
Police	110
Fire	119
Ambulance	120
Traffic Accident	122
Telephone Number Enquiry	114
Weather Forecast	12121
Anhui Tourist Complaints	551-62821763
Railway Ticket	95105105
Hefei Xinqiao International Airport	551-63777888
Hefei Xinqiao International Airport Website	www.hfiairport.com
Huangshan Airport	559-2934144
Hefei Bus Station	551-64297263
Huangshan Passenger Terminal	559-2666666
Hefei Municipal Tourism Bureau	551-6353736
Huangshan City Tourism Bureau	559-2514091
Tourism Bureau of Anhui Province	551-62999150



Wuhan High Speed Railway, Shanghai-Nanjing High-speed Railway, etc.

By Road

Anhui ranks top in the nation in terms of highway density. There are 14,857 passenger bus lines in the province, including 1,714 trans-provincial lines and 2,567 trans-regional lines, with a total operating mileage of 2,716,717 million kilometers.

By Train

Passenger railways mainly include the Beijing-Shanghai Railway, Lianyungang-Lanzhou Railway, Beijing-Kowloon Railway, Qinglongshan-Fuyang Railway, Fuyang-Huainan Railway, Huainan-Yuxikou Railway, Xuancheng-Hangzhou Railway, Anhui-Jiangxi Railway, Nanjing-Xi'an Railway, Shanghai-Chengdu Railway, etc. High-speed railways mainly include the Beijing-Shanghai High-speed Railway, Hefei-Fuzhou High-speed Railway, Hefei-Bengbu Passenger Dedicated Line, Shanghai-Hangzhou Passenger Dedicated Line, Hefei-

Accommodations & Travel Services

Accommodations

Name	Star-rate	Add	Tel
Hilton Hefei Yuanyi	5	No. 198 Shengli, Hefei	551-62808888
Gujing Holiday Inn, Hefei	5	No. 1104 Changjiang E. Rd., Hefei	551-62206666
Anhui Hotel	4	No. 18 Jianshan Rd., Hefei	551-62218888
Huangshan Xuanyang International Hotel	5	No. 1 Jinding Blvd., Huangshan Dist., Huangshan	559-8508888
Huangshan Pine Golf & Country Club	5	No. 78 Yingbin Blvd., Tunxi Dist., Huangshan	559-2568000
Huangshan International Hotel	4	No. 31 Huailian Rd., Tunxi Dist., Huangshan	559-2569678
Anqing Hotel	4	No. 66 Huainan Mid. Rd., Anqing	556-5396000
Anqing Huameishanhuang Hotel	3	No. 9 Huainan Mid. Rd., Anqing	556-5366677
Jiuhua Museum Dongyue Hotel	4	No. 9 Huasheng Rd., Jiuhua Mountain, Chiduo	566-2813170
Chizhou Baishai Hotel	4	No. 2 Cuibai Mid. Rd., Chizhou	566-2034255

Travel Services

Name	Add	Tel
Anhui China Travel Service	No. 1 Huilong Bridge, Luoyang District, Hefei	4009552223
Anhui Overseas Tourist Co., Ltd	5th Floor, CITI Building, No. 53 Meilian Rd., Hefei	551-62837577
The Development of International Travel Agency in Huangshan City	Room 402, 3 Building, No. 27 Xukou N. Rd., Huangshan	559-2627228
Huangshan Travel Overseas	6 & 7 th Floor, Block B, Tianyu International Hotel, No. 5 Tianyu Blvd., Tunxi District, Huangshan	559-2522985
Anhui Youth International Travel Service	Baica Complex Building, Cuibai Rd., Chiduo	566-2811019



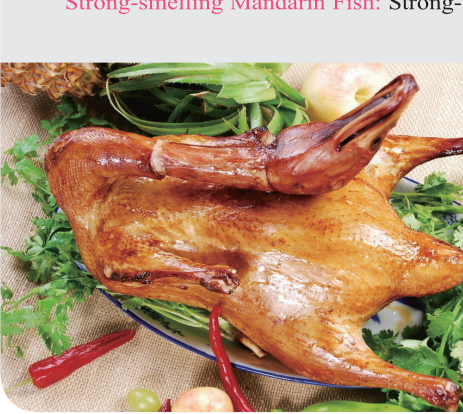
Dining and Shopping

Dining

Anhui cuisine, one of the eight major cuisines in China, is famous for delicacies from mountains and for dietetic nourishment. This cuisine pays attention to oil, color, and the degree of heating. It has a history of a



thousand years. Traditional famous Anhui dishes include salted fresh mandarin fish, fish maw with crab, stewed pigeon with Chinese yam, braised turtle and chukar, shredded bamboo shoots with Shexian County flavor, Li Hongzhang's stew, Baogong fish, Hu's Yipin pot, Jixi County fried vermicelli, etc.
Strong-smelling Mandarin Fish: Strong-



smelling Mandarin Fish is a famous dish in Huizhou. Pungent smell is the unique of this dish. It tastes delicious.

Shopping

Among special local products, tea and craftwork are the most famous. Tea varieties include Huangshan Maofeng Tea, Xiangpin in Lu'an City, Anhui Qibing tea, Anhui Houkui, and so on. Craftwork includes feather fans, bamboo reed carvings, Fengyang ink sculptures, rice paper, brush pens, ink sticks produced at Huizhou, ink stones produced in Shexian County, and so on.



Huizhou Ancient City

The Huizhou ancient city scenic area is home to the ancient Huizhou Prefecture. The ancient city has five peaks and six rivers, with lovely mountain and water scenery. In the scenic area, there are ancient bridges, ancient towers, ancient streets, ancient alleys, ancient dams, and an ancient memorial archway, boasting a primitive simplicity, and making this scenic area shanxian a magnificent history museum.
Website: www.huizhoufu.net

Xu Guo Stone Memorial Archway

Xu Guo Stone Memorial Archway is the most outstanding representative of stone memorial archways in Huizhou, and



represents the highest level of stone memorial archway construction. With four columns and three layers, the stone memorial archway passed through the several hundred years of the Ming and Qing dynasties, enjoying a prominent position in the history of stone archway architecture. It is unique in the whole country.

Yuliang Ancient Town

Shexian County's Yuliang was a pier in ancient times and the county's only waterway for a long time. Yuliang Old Street maintains its former style. At the end of the ancient street is Yuliang Dam. It is the oldest and largest dam on the Xin'an River.



Huizhou Culture

Huizhou Culture in the Xin'an River Basin is one of the representatives of traditional Chinese culture. It embodies the perfect combination of Confucian principles with business practice. Huizhou culture, Tibetan studies and Dunhuang studies are known as the "three local studies in contemporary China".

Anhui Cuisine

Anhui cuisine, originating in Huizhou, is one of the eight regional cuisines of the Han Ethnic Group in China. Mountain delicacies make Anhui cuisine unique. There are hundreds of major famous dishes such as stewed turtle and ham, braised paguma larvata, salted fresh Mandarin fish and stewed pigeon.



Huizhou Style Architecture

Huizhou Style Architecture is one of the most important styles in ancient Chinese architecture. It is exquisitely designed, with various shapes and rhythmic beauty, characterized by Matou Walls and Chinese-style tiles.

Scholar's Four Jewels

Southern Anhui is the hometown of the "Scholar's Four Jewels" (the writing brush, ink stick, ink slab and paper) in China. Writing brushes, paper, ink sticks and ink slabs are all produced in Jingxian County, Shexian County, Tunxi and other places in

Xuancheng City. The production centers of the Scholar's Four Jewels are densely located, with a long history and exquisite craftsmanship that is rare in the world.

Anhui Cuisine

