

# SHANGHAI

TRAVEL MAP (HAND ILLUSTRATED)

中华人民共和国国家旅游局  
China National Tourism Administration

## China National Tourism Administration Overseas Offices

- China National Tourism Administration Tokyo Office**  
#6-2001 Ar China Building 8F, 2-2-2 Toranomon, Minato-ku, Tokyo, Japan  
Tel: +81-3-2691-8888 Fax: +81-3-2691-8888  
Web: www.cnata.jp E-mail: tokyo@cnata.jp
- China National Tourism Administration Osaka Office**  
556-2817 OCAT Building 4F, Minatomachi, Naniwa-ku, Osaka, Japan  
Tel: +81-6-6635-3280 Fax: +81-6-6635-3281  
Web: www.cnata.or.jp E-mail: osaka@cnata.jp
- China National Tourism Office, Singapore**  
7 Temasek Boulevard, # 12-02A Suntec Tower One, Singapore 038987  
Tel: +65-6338-2220 Fax: +65-6338-0777  
E-mail: singapore@cnata.gov.cn
- China National Tourism Office, Kathmandu**  
4242 Southern Cross Road, International Airport, Nepal  
Tel: +977-1-4400-1054 Fax: +977-1-4400-1053  
E-mail: nepal@cnata.gov.cn
- China National Tourism Office, Seoul**  
#1501 Donggongni Bldg. 3/F, Tongyeang, Chung-Ang, Seoul 100-706, Korea  
Tel: +82-2-773-0393 Fax: +82-2-797-2210  
Web: www.cnata.or.kr E-mail: seoul@cnata.or.kr
- China National Tourism Office, New Delhi**  
D-16, Malviya Marg, Chanakya, New Delhi-11002, India  
Tel: +91-11-4168-0541 Fax: +91-11-4168-0541  
Web: www.cnata.org.in E-mail: india@cnata.org.in
- China National Tourism Office, Sydney**  
110 Pitt Street, 230 George Street, Sydney NSW 2000, Australia  
Tel: +61-2-9552-9838 Fax: +61-2-9552-2728  
Web: www.cnata.org.au E-mail: sydney@cnata.gov.cn
- China National Tourism Office, New York**  
275 Lexington Ave., 35th Floor, New York, NY 10017, USA  
Tel: +1-212-760-8218 Fax: +1-212-760-8800  
Web: www.cnata.org E-mail: ny@cnata.org
- China National Tourism Office, Los Angeles**  
350 South Grand Boulevard, Suite 900, Century City, CA 90008-4922, USA  
Tel: +1-818-545-7927 Fax: +1-818-545-7906  
Web: www.cnata.org E-mail: la@cnata.org
- China National Tourism Office, Toronto**  
487 Bloor Street West, Suite 1000, Toronto, Ontario M5W 1K7, Canada  
Tel: +1-416-593-9526 Fax: +1-416-593-0302  
Web: www.cnata.org E-mail: toronto@cnata.org
- China National Tourism Administration** www.travelchina.gov.cn

## Shanghai Overview

Shanghai is located on the coast of the East China Sea beside the estuary of the Yangtze River. It is the largest metropolis in China and a famous cosmopolitan city in the world. It is China's largest port, as well as an important center of finance and commerce.

It has a sub-tropical maritime monsoon climate with warm springs, hot summers, cool autumns and chilly winters. Yearly rainfall is moderate, with the Metyu period (rainy season) in June and July and a typhoon season in August and September.

It is a city with a rich historical and cultural heritage. In 1843, it became a concession territory for many countries. From that time on, the city rapidly developed into the most prosperous one in Asia, earning the nickname "Glamorous Shanghai".

Modern Shanghai has seen incredibly rapid growth, with the Lujiazui Financial & Trade Area and Shanghai Free Trade Zone, in particular, seeing the most dynamic economic development in China. In Lujiazui, one can see the many skyscrapers, such as the Oriental Pearl Tower, Jin Mao Tower and the World Financial Center, which are now famous sightseeing destinations. In 2010, Shanghai successfully hosted the World Expo bringing new attention to locations such as the Palace of Chinese Culture & Art, now an important feature of Shanghai's cultural landscape.

Website: www.shanghai4tour.net

### Area & Population

About 6,340 square kilometers.  
By the end of 2012, the permanent population was 23.80 million.

### Administrative Divisions

Shanghai comprises 16 municipal districts and 1 county, and the City Hall is located in Huangpu District.



## Featured Neighborhoods

### Yuyuan Garden and Old City God Temple

Yuyuan Garden and Old City God Temple boast traditional Shanghai products and snacks, traditional Chinese brands, as well as exclusive one-of-a-kind shops not available anywhere else. With shoppers coming and going, these locations are constantly bustling with excitement and entertainment.



### Duolun Road

Long recognized as the center of modern Chinese literature, Duolun Road is a small street in Shanghai where one can take in a rich cultural atmosphere amongst the former residences of famous Chinese authors and intellectuals including Lu Xun, Mao Dun, Guo Moruo, and Ye Shengtao.



### Tianzifang

Walking on Tianzifang, one can see many featured shops and art workshops. There are also teahouses, outdoor restaurants and cafes, art galleries and many famous art studios.



## Old Villas

### Moller Villa

Moller Villa was owned by Mr. Moller, a British Jew, who built the villa after getting rich betting on horses in Shanghai. Built in typical Norwegian style, this villa looks like a castle right out of the fairytales.



### Ding Xiang Garden

Ding Xiang Garden is one of the most famous and best-preserved old townhouses in Shanghai. Formerly the private garden of Li Hongzhang, famous chancellor of the late



Qing Dynasty, this area also contains a unique American-style townhouse, the former residence of Qing official Li Hongzhang and his concubine Ding Xiang.

### Sir Elly Kadoorie's Residence

Sir Elly Kadoorie's Residence is magnificent with a large lawn and evenly arranged marble columns. Its large ballroom, dining hall and long but narrow balcony gives this townhouse the appearance of an imperial palace.



## Shikumen

### Shanghai New World

Shanghai New World, now an international mall containing numerous food, shopping and performance venues, designed in traditional Shikumen architecture, still retains its original brick walls and roofing tiles.

### CPC First National Congress

CPC First National Congress is an exemplary model Shanghai architecture in the Shikumen style, with an external wall built with blue and red bricks, decorated with white line lines, red carved patterns on the lintel, a black painted gate with copper rings and a door frame wrapped with beige stone stripes.

### Huaihaifang

When visiting Huaihaifang, one must visit the former residences of Ba Jin and Xu Guangping. Huaihaifang No. 33 is also where the famous movie star Hu Die once lived for some time.



## Museum

### Shanghai Museum

Established in 1952, Shanghai Museum is a large museum of ancient Chinese art. It houses 120,000 valuable antiques and has earned international recognition for its diverse and high-quality collections.

### China Art Museum

The art works housed and displayed in the China Art Museum represent the highest level of achievement of Chinese art. The museum also displays art works from other parts of the world. The most important exhibit at the Shanghai World Expo, the



Riverside Scene at Qingming Festival, is now displayed in China Art Museum in multimedia format.  
Website: china.artmuseumonline.org

### Shanghai Madame Tussaud's

Shanghai's Madame Tussaud's is the sixth Madame Tussaud's in the world, and displays the highest number of science and technology exhibits of any Madame Tussaud's in the world. Some of the notable figures found in this museum include Yao Ming, Liu Xiang, Lin Dan, Jackie Chan, Marilyn Monroe, Jay Chou, Fan Bingbing and other celebrities.  
Website: www.madamtussauds.com



## The Bund

The Bund, on the western bank of the Huangpu River, provides Shanghai's beautiful skyline. The Bund's exotic Gothic, Roman, Baroque, and Chinese-western style buildings make it widely recognized as a unique melting pot for international and multi-cultural architecture.

### Bund 18

In 2006, the Bund 18 was recognized with the UNESCO Asia-Pacific Heritage Award for Cultural Heritage Conservation with special recognition given to its classical Roman and Greek architectural style and art.

### Shanghai Customs House

Shanghai's Customs House is the Bund's most distinguished architectural feature. It is most famous for its immense bell tower and huge clock, which is the largest clock in Asia and one of the most famous in the world.

### Waibaidu Bridge

Waibaidu Bridge is one of the landmark buildings of old Shanghai. As a traditional steel structure, it seems to take one back to the 19th century. It has also been featured in the backdrops of many films shot in Shanghai.



## Lujiazui

Lujiazui is Shanghai's major financial and trading zone and one of the three major CBDs in the world. Its many skyscrapers and office buildings offer an incredibly dazzling urban atmosphere, while the largest open lawn in Shanghai provides a place for lively activities and great entertainment.

### Oriental Pearl Tower

The Oriental Pearl Tower is a landmark building in Shanghai. Its designers combined 11 spherical structures of different sizes to produce a truly distinct work of architecture. One can ascend to the 267-meter-high revolving restaurant above the spherical structures to enjoy the fascinating scenery of the Huangpu River.



### Jin Mao Tower

Jin Mao Tower is a skyscraper integrating Oriental and Occidental architectural arts. Its special feature is China's largest observation deck on the 88th floor, where one can take in the scenery from a height of 340.1 m.

### World Financial Center

The highlight of the World Financial Center, which is the tallest building in Shanghai, is its observation deck located on 100th floor, which is 474m high and is considered the highest in the world.

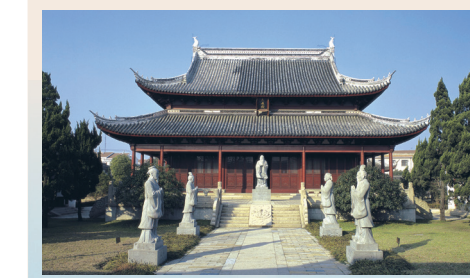


## Chongming Island

Chongming Island is located at the mouth of the Yangtze River. As the third largest island in China and the world's largest river estuary alluvial island, it is known as the Door to the Yangtze.

### Chongming Scholastic Palace

Chongming Scholastic Palace displays themed exhibits including the history of Chongming Island, ancient ships and Chongming customs. Exhibits include a display of two ancient ships from the Tang and Song dynasties, the most precious and unparalleled cultural relics in the Shanghai region.



### Dongping National Forest Park

Dongping National Forest Park, famous for its peaceful and beautiful atmosphere, includes forest restaurants, outdoor tents, forest hammocks and a youth camp for activities such as forest grass skiing, rock climbing, beach volleyball, forest strop ropeways, paintball and outdoor barbecues.

### Dongtan Wetland Park

Appreciated for its beautiful view of the sunrise, Dongtan Wetland Park is also a central location for the yearly winter migration of millions of water fowls, making it an excellent site for bird watching.  
Website: www.dongtanshidi.com



## Dianshan Lake

Dianshan Lake's clean water surrounded by charming trees reminds one of the coastal villages of Southern China. Situated near Taihu Lake in the east, Dianshan Lake is the site of many historical relics, and has become a very popular tourist destination.

### Shanghai Grand View Garden

Shanghai Grand View Garden is a large landscape garden duplicating the one depicted in the Chinese novel *A Dream of Red Mansions*. With exquisite design and architecture, it is a typical Southern China landscape garden with running waters, buildings, hills and other natural landscapes.

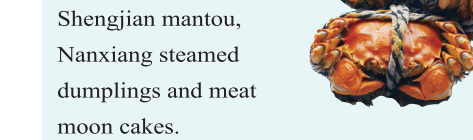
### Zhujiajiao Ancient Town

Zhujiajiao, known as the Venice of Shanghai, is full of water and bridges and an ancient atmosphere. The boat race, held every year on the 27th day of the seventh month of the Lunar Calendar from the Fangsheng Bridge, is the most attractive and exciting event in this ancient town.



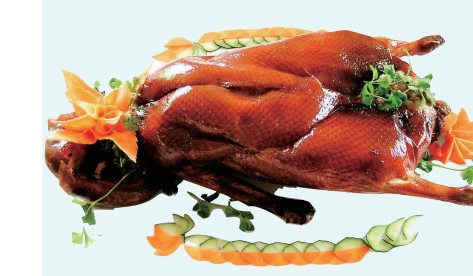
## Dining

Culinary delicacies from all over the world can be found in Shanghai. The local cuisine is famous for its use of fresh ingredients, including many favorite local snacks such as Shengjian mantou, Nanxiang steamed dumplings and meat moon cakes.



### Shengjian Mantou

Shengjian mantou is a local Shanghai snack. Locals prefer fresh pork and pork skin stuffing, but many other kinds of stuffing, such as chicken and shrimp, are also used. Its crispy base, thin wrap and fragrant meat stuffing make for a delicious snack. Finished in one bite, the mantou's juicy pork stuffing and sesame ingredients burst in your mouth, providing a wonderful flavor experience.



### Duck Stuffed with "Eight-Treasures"

"Eight Treasures Duck" is a famous Shanghai dish that can be found around the City God Temple. The original flavor of the

plump duck is maintained in the process of cooking. Fresh out of the steamer, this dish, served with shrimp and green beans cooked in steamed duck gravy, fills the whole room with its fragrance.



## Shopping

Shanghai, the commercial center of China, is known as a Shopping Paradise where you can find the most fashionable luxury brands from all over the world. Its most famous local products are spiced beans and the City God Temple's Ligao candy.

### Nanjing Road

Shanghai's Nanjing Road is one of the most lively commercial streets in the city and is known as a paradise for merchants and shoppers. The Nanjing East Road Pedestrian



### Huaihai Road

Huaihai Road is one of the most prosperous commercial streets in Shanghai. It is recognized as the most beautiful, modern, exotic and romantic street in the city.



## Transportation

### By Air

Shanghai has two international airports, Shanghai Hongqiao International Airport and Shanghai Pudong International Airport.

### Featured Neighborhood Tour in Shanghai

Route: Duolun Road - Fuzhou Road - Tianzifang - Hengshan Road - Wukang Road  
Sight: Along this route, you can find the former residences of many famous people as well as the Culture Street lined with many bookstores, the narrow and tranquil Art Neighborhood, and the bar and café street, all providing a rich atmosphere for art and literature lovers.

### By Train

There are three major railway stations in Shanghai: Shanghai South Railway Station, Shanghai Railway Station and Shanghai Hongqiao Railway Station.



Shanghai Hongqiao Railway Station is the largest and most modern passenger railway station in the city.  
Almost all large and medium-sized cities in China have trains reaching Shanghai, with major high-speed railways including the Beijing-Shanghai High-speed Railway, Shanghai-Nanjing High-speed Railway and Shanghai-Hangzhou High-speed Railway.

### Railway Transit

Shanghai's highly developed metro system consists of 13 lines, and is one of the busiest in the world, covering the city's sprawling downtown and suburban areas. Shanghai also has a magnetic levitation rail making up the Shanghai Pudong Airport route, which connects Longyang Road Metro Station and Shanghai Pudong International Airport.



## Accommodations

### Accommodations

Name	Star-rate	Add	Tel
Shanghai Building	5	No.20 N. Suzhou Rd.	21-63246260
Crowne Plaza Century Park Shanghai	5	No.1433 Minsheng Rd.	21-51908888
Dongjiao State Guest Hotel	5	No.1800 Jinke Rd., Pudong District	21-58958888
Doubletree by Hilton Shanghai - Pudong	5	No.889 Yangqiao S. Rd.	21-50504888
Peace Hotel	5	No.20 Nanjing E. Rd.	21-63216888
Shanghai Four Seasons Hotel	5	No.500 Weibai Rd.	21-62568888
Grand Hyatt Hotel Shanghai	5	Jinmaso Building, No.88 Century Ave., Pudong District	21-50491234
Langham Hotel Shanghai	5	No.534 Hengshang Rd.	21-62480000
Hilton Hotel Shanghai Jinqin	5	No.290 Huashan Rd.	21-64377050
Huangting Hotel	5	No.1200 Casin X. Rd.	21-64396000
InterContinental Hotel, Shanghai Pudong	5	No.777 Zhangyang Rd., Pudong District	21-58356666
Shangri-La Hotel, Shanghai Pudong	5	No.33 Fucheng Rd., Pudong District	21-68828888
Pullman Shanghai Skyway Hotel	5	No.15 Dapu Rd., Huangpu District	21-33189988
Regal International East Asia Hotel	5	No.516 Hengshang Rd.	21-64155888
Sun Island Resort	5	No.2888 Shentia Road, Qingshi District	21-61869688
Bao An Hotel	4	No.800 Dongfeng Rd., Pudong District	21-51159888
Bao Steel Group Baoshan Hotel	4	No.1813 Mudanjiang Rd.	21-66890888



## Travel Services & Useful Telephone Numbers

### Travel Services

Name	Add	Tel
CYTS Shanghai International Travel Service	Room 719 B, No.625 Zhang Jiang Rd.	21-61096396
Pepe Love (Shanghai) Travel Service	Room 510, No.1277 Beijing W. Rd., Jing'an District	21-62895599
Show Tour (Shanghai) International Travel Service	3rd floor, Shen Building, No.266 Hankou, Rd.	21-63297878
Sindh International Travel Service	13th floor, South Section of Manning Tower, No.35 Yongjia Rd.	21-69904700
Star Cruises Travel Service (Shanghai)	No.1102 Zhongshan N. Rd.	21-62580202
JTB (Shanghai) International Travel Agency	6-D Shize Building, No.18 Caoxi N. Rd.	21-64644671
China Travel Service (Shanghai)	9th floor, HCKTS Building, No.868 Changshou Rd.	21-22180888
CTIS Group (Shanghai)	16th floor, Tower 1, No.1001 Changan Rd.	21-63178190
Shanghai Jianguang HYG International Business Travel Company Limited	No.127 Xikang Rd.	21-32174000

### Useful Telephone Numbers and Websites

IDD Code of China	86
Police	110
Fire	119
Ambulance	120
Traffic Accident	122
Telephone Number Enquiry	114
Weather Forecast	12121
Shanghai Airport Inquiry	21-969990
Shanghai Airport Authority Website	www.shanghaiairport.com
Shanghai Long Distance Bus Station	21-66050000
Shanghai Long Distance Bus Station Website	www.kyzz.com.cn
Shanghai Tourism Hotline	21-962020
Shanghai Tourism Exhibition Website	www.meet-in-shanghai.net
Shanghai Tourism Center Website	www.chinassbc.com

